

Tours

This year we have both **Directed** and **Self-Directed Driving Tours** throughout the state of Vermont and into New Hampshire. We also have 2 **International Driving Tours** into Canada. A valid passport is required.

As part of the Tour portfolio this year, we have 3 hour **Lunch and Dinner Cruises** that depart from Newport, VT. The “Northern Star” cruises up into Canada on Lake Memphremagog. Inasmuch as the vessel does not dock in Canada, no passport is required. The vessel has both enclosed and open decks for all weather cruising!



Parade Driving Tours have become the most popular Parade activities in recent years. Naturally, and for a good reason, we are all driving our Porsches. These driving tours are similar to the ones many of you may do in your home regions but on un-familiar blacktop with new and amazing scenery!

For safety reasons, we suggest that driving tour participants have a working cellular phone, a GPS device and a navigator/observer. In this age of *distracted driving*, it is important that we as a group drive safely and courteously on all of our tours.

There are 2 main Directed Driving Tours that repeat during the week. So you can pick and choose your tours to coordinate with other planned activities. The lunch and dinner cruises also repeat. All tours include a variety of points of interest and a destination(s). Some of the tours include lunch. Expect spectacular scenery and unbelievable driving roads and of course unmatched Porsche camaraderie. The Self-Directed Tours offer a wide variety of destinations that you can visit on your own schedule.



Scroll down for descriptions of all the tours we'll be offering this year:

International Driving Tours (Self Directed)

DRIVE AND EAT TO THE 3rd POWER INTERNATIONAL DRIVING TOUR

A PASSPORT IS REQUIRED

This tour into Canada takes a clock-wise tour around Lake's Memphremagog, Massawippi and Lovering before proceeding back to Jay Peak. Feel free to stop anywhere along the route. There are an amazing number of points of interest. We leave the resort and head northwest to North Troy, VT where you go through Canadian Customs. Then the tour heads north to Mansonville where you can enjoy coffee and pastries at the **Boulangerie Owl's Bread**.



Boulangerie Owl's Bread Mansonville

299a Principale, CP155

Mansonville, Quebec, J0E 1X0, Canada

tel: 450 292 3088

Monday, Tuesday: closed sorry!

Wednesday, Thursday: 9.00 a.m. to 5:30 p.m.

Friday: 9.00 a.m. to 7.00 p.m.

Saturday: 8.00 a.m. to 5.30 p.m.

Sunday: 8.00 a.m. to 5.00 p.m.

Boulangerie Owl's Bread

After that it proceeds easterly toward **Owl's Head Ski Resort** located on the shores of Lake Memphremagog. The tour proceeds north along the lake toward Knowlton Landing, Bryant's Landing, Southiere-Sur-Le Lac and into the city of Magog. You may want to stop for a delicious Mexican lunch at **Guacamole Y Tequila Restaurant** in Magog. 112 Rue Principale O, Magog, QC J1X 2A5, Canada
Phone: +1 819-868-0088

Hours: Wed thru Fri 11:00 a.m. to 2:00 p.m.



You will then proceed east through Sainte Catherine-de-Hatley and North Hatley. You will then proceed south along Lake Massawippi and through Massawippi to Ayer's Cliff. You then proceed west and eventually south along Lake Lovering to Fitch Bay. You then proceed south on QC-247 S to **Bleu Lavande Lavender Farm**.



Bleu Lavande Lavender Farm
Address: 891 Chemin Narrow (Route 247)
Stanstead (Fitch Bay), QC J0B 3E0, Canada
Phone: +1 819-843-5857
Hours: 10 a.m. to 5 p.m. daily

Then continue southeast to **Rucher Bernard Bee Bec**, beekeepers that produce honey and mead.

Rucher Bernard Bee Bec

152, rue Principale
Stanstead, Quebec J0B 3E4
819-876-2800
Hours: Wednesday to Sunday, 11 a.m. to 6 p.m.
Call to confirm their hours.



Their mission is to produce honey and by-products of the hive such as propolis. Propolis is a red or brown resinous substance collected by honeybees from tree buds, used by them to fill crevices and to seal and varnish honeycombs. Bernard Bee Bec honey is lightly manipulated in order to preserve its flavor and its nutritional value and/or medicinal purposes. They also produce mead made from modern oenology and it can be consumed as an aperitif, during a cocktail and during meals. During the summer, they products are available at the boutique.

Once you have your fill, proceed southeast toward the U.S./Canadian border and Derby Line, VT. You pass through U.S. Customs in Derby, VT, home to the **Derby Line Village Inn**. Feeling hungry? The Inn offers gourmet German cuisine at reasonable prices. Make reservations, this is a very popular restaurant.



Derby Line Village Inn
440 Main St
Derby Line, VT 05830
Phone: (802) 873-5071

INTERNATIONAL VINEYARD AND ORCHARD DRIVING TOUR

A PASSPORT IS REQUIRED

Okay so we aren't near Napa, or Sonoma, or Paso Robles. But we are near the "Eastern Township" wineries which are located just northwest of Jay Peak in Canada. The first stop on the tour is at **Vignoble Domaine de l'Ardennais** in Stanbridge Station, Quebec.



Producers of red, white and rosé wines and a variety of aperitif and digestive liquors. A path through the floral park overlooking part of the vineyard, and the picnic facilities allow you to relax and enjoy the quiet surroundings.

Our next stop is **Vignoble Domaine du Ridge** in Saint-Armand, Quebec. Domaine du Ridge includes 42 acres of land. The first vines were planted in 1996 and the vineyard now has over 55 000. You will travel through the



century-old tree tunnel on Ridge Road to find them. Their vineyard installations and vast facility were built in the midst of their vines, with their little store and old farmhouse from the end of the 19th century, now housing their offices.

Your next stop will be **Clos Saragnat** in Frelighsburg, Quebec. It is in Frelighsburg, on one of Quebec's oldest orchards, that Louise Dupuis and Christian Barthomeuf took the first steps back in 2002 that would bring about the creation of Clos Saragnat. The orchard and now vineyard occupy an area 35 hectares at an altitude of 220 meters on the south flank of Mount Pinnacle; a sentinel of the Appalachian mountain chain, located a mere mile from the Vermont (U.S.A) border, on the 45th parallel, hence benefitting from the best possible exposure for growing fruit.





Christian Barthomeuf is the pioneer of ice cider (cidre de glace) production. He makes small scale, organic alcoholic cider, by fermenting the juice of apples that have been left to freeze in frigid Quebec.



Then you are off to **Domaine Pinnacle**. **Domaine Pinnacle** is a family-owned orchard, cidery, and maple-grove located near the village of [Frelighsburg](#). Founded in 2000 by Charles Crawford and Susan Reid as a cidery, the company's products are available today in more than 50 countries, having won more than 100 gold medals in prestigious national and international competitions. All ciders are available for tasting at no charge in their boutique. Domaine Pinnacle products, as well as a range of other regional products, are available on site.

Explore every facet of ice cider and discover the history of Quebec apples and pomiculture at the interpretation centre. You can also relax on their sunlit terrace and take advantage of the spectacular scenery.

At the conclusion of your visit to Domaine Pinnacle you will head back to the United States. You will pass through U.S. Customs and then back to the Jay Peak Resort area.



International Lunch and Dinner Cruises

NORTHERN STAR LUNCH CRUISES ON LAKE MEMPHREMAGOG



This International Canadian Lunch Cruises which originates in downtown Newport, VT, will take you north into Canada on Lake Memphremagog. The area is amazingly beautiful (see pictures). The cruise was voted "Best of New England" by Yankee Magazine. You'll cruise over 18 miles north, well into Canadian waters where you will pass by **Owls Head Resort, Georgeville, the St. Benoit Monastery and Sargent's Bay**. The lake gets narrow and deep, the mountains get big, the history is rich and the homes are unbelievable. Nowhere else in the country can you experience an International Lake Cruise like this, and best of all NO passports are needed!

Weather will play no factor on the lunch cruises inasmuch as the enclosed cabins can easily accommodate all the passengers in foul weather.

Otherwise step outside onto the deck and enjoy the sun, the breeze and the amazing scenery! Our vessel, **The Northern Star**, departs at 11 a.m. and returns at approximately 2 p.m. Lunch includes their very popular lunch ciabatta bread sandwich buffet, fresh Caesar salad, homemade soup and pasta salad and dessert. (Cash bar available)

Lunch Cruises are limited to 45 passengers per day.

The International Lunch Cruise Schedule is as follows:

Tuesday	06/21/16
Wednesday	06/22/16
Thursday	06/23/16
Friday	06/24/16
Saturday	06/25/16



Plan to arrive at the dock no later than 10:45 a.m. The Newport Dock is approximately 45 minutes from Jay Peak Resort. So plan your trip accordingly. You snooze, you lose!

* WARNING: This tour goes into a foreign country. The vessel does not dock in Canada and **no U.S. Passport is required**.

All passengers will be required to provide **Names, Date of Birth, Place of Birth and Citizenship** for Canadian Customs during **Parade Registration**. There are no exceptions. Cruise registrations will be locked on 05/31/16. **Once registration closes, you cannot switch dates.**

Northern Star Lake Cruises, 84 Fyfe Dr, Newport, VT 05855 Phone :(802) 487-0234

NORTHERN STAR DINNER CRUISES ON LAKE MEMPHREMAGOG



These International Canadian Dinner Cruises, which originate in downtown Newport, VT, will take you north into Canada on Lake Memphremagog. The area is amazingly beautiful (see pictures). The cruise was voted "Best of New England" by Yankee Magazine. You'll cruise over 18 miles north, well into Canadian waters where you will pass by **Owls Head Resort, Georgeville, the St. Benoit Monastery and Sargent's Bay**. The lake gets narrow and deep, the mountains get big, the history is rich and the homes are unbelievable. Nowhere else in the country can you experience an International Lake Cruise like this, and best of all **NO** passports are needed!

Weather will play no factor on the dinner cruises inasmuch as the enclosed cabins (see above) can easily accommodate all the passengers in case of foul weather.

Our vessel, **The Northern Star**, departs at 5:30 p.m. and returns at approximately 8:30 p.m. After a **Bon Voyage Champagne Toast**, we will enjoy dinner which includes a **6oz. NY Sirloin Strip Steak, Maine Lobster Tail, Baked Potato, Corn On The Cob, Caesar Salad plus Dessert (cash bar available)**

We will travel by **motor coach** from the Jay Peak Resort to the Newport Dock and back. The drive is approximately 45 minutes.



Cruises are limited to **40** passengers per day.

The International Dinner Cruise Schedule is as follows:

Monday	06/20/16
Tuesday	06/21/16
Wednesday	06/22/16
Thursday	06/23/16
Friday	06/24/16

* **WARNING:** This tour goes into a foreign country. The vessel does not dock in Canada and no U.S. Passport is required. All passengers will be required to provide **Names, Date of Birth, Place of Birth and Citizenship** for Canadian Customs during on-line **Parade Registration** in April. There are no exceptions. Cruise registrations will be locked on 05/31/16. **Once locked, you cannot switch dates or change passengers.**

Northern Star Lake Cruises, 84 Fyfe Dr, Newport, VT 05855 Phone :(802) 487-0234

Domestic Driving Tours – Directed

LAKE CHAMPLAIN DRIVING TOUR (DIRECTED)

On Tuesday thru Saturday a directed tour will head west to the Lake Champlain Islands. We will drive through North Hero Island, Grand Isle and South Hero Island. The water views are spectacular. The natural beauty is amazing! We will drive south on Route 2 before we rejoin the Vermont mainland.

We will proceed south to Burlington, VT. Burlington is the largest city in Vermont. It lies 45 miles south of the Canadian border. A regional college town, Burlington is home to the University of Vermont ("UVM"). In 2015, Burlington became the first city in the United States to run completely on renewable energy. Burlington is a very cosmopolitan city with great shopping and fine dining.

Did I say fine dining?

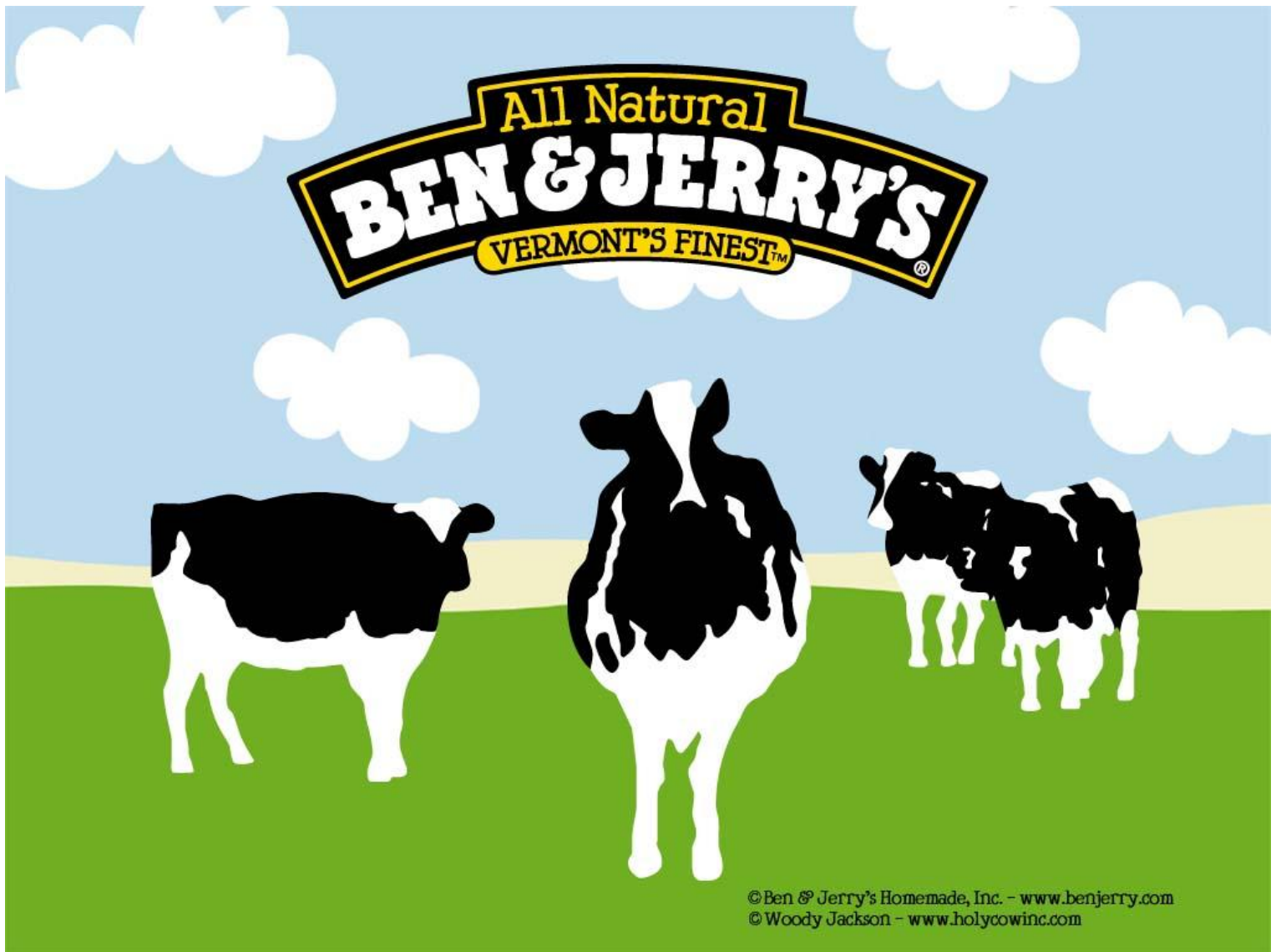


We will stop for lunch at **Splash at the Boathouse**, directly (and I mean directly) on Lake Champlain. You can look out across the lake to New York State as you enjoy your meal and work on your tan! After lunch you can shop, browse and explore all around Burlington or set your sights on the Jay Peak Resort and head home. Parking has been arranged just a short distance from the restaurant and we can all park our cars together in a private parking lot.



Tour is limited to 100 people per day.

BEN & JERRY'S DRIVING TOUR (DIRECTED)



Ben & Jerry's is a Vermont tradition. From a renovated gas station in Burlington, Vermont, to far-off places with names we sometimes mispronounce, the journey that began in 1978 with 2 guys and the ice cream business they built is as legendary as the ice cream is euphoric.

We will cruise south from the Jay Peak Resort on VT-100 through the countryside as we head toward Waterbury, VT, and guess what, we pass right by Ben & Jerry's, and continue to Fresh Tracks Farms Vineyard and Winery near Montpelier. There we will dine on a catered gourmet lunch in their tasting room.



Fresh Tracks Farm was founded in 2002 with the goal of crafting authentic wines in a beautiful yet challenging climate. Christina Castegren, the winemaker and proprietor sought to build upon her knowledge of agriculture, and fulfill her passion for working with the environment around her. She and a team of colleagues and friends spent years preparing fields, constructing trellises, gathering equipment, and planting vines. Of the seventeen original varieties, only six remain, but those that survived the first few pioneering

years of experimentation are now central to their wine list. Eventually, they planted three grapes for jam production and one edible variety for their afternoon snacks. In 2006, they produced their first vintages of Little Piggy Pink, Vermont Rosé, and Frontenac Gris. During this period, they ventured into maple syrup, grape jam, and red wine vinegar production as well, and it all took place in their little red barn up on the hill. After several years, they finished construction on their tasting room and production facility along Route 12, and in 2009, opened it to the public. Now, in 2016, they have plans underway to plant a new vineyard, and will continue to produce premium Vermont wines for us to enjoy!

FRESH TRACKS FARM, VINEYARD AND WINERY

4373 VT 12, Berlin, VT 05602

802-223-1151 info@freshtracksfarm.com



After lunch we will head back over to the Ben & Jerry's factory and tasting room. Once there we will break into groups and line up for their guided factory tours. Their 30-minute guided ice cream factory tour is fun and educational for all ages. They will offer us the opportunity to learn about their ice cream manufacturing process and explain how they incorporate values-led decisions that drive their business. They know that getting your favorite flavor or trying a new one is priority at the factory, so their full service scoop shop menu includes special items (hello, Vermonster!) as well as traditional favorites (like waffle cones and hot fudge sundaes!). Can't decide? Their scoopers are equipped to offer suggestions and sample tastes.

Gift items from hats to t-shirts, beach towels to flavored lip balms, and oodles

more of all things Ben & Jerry's can be found in their Gift Shop. Cap off your visit with a stop in their Flavor Graveyard to pay your respects to their dearly de-pinted, retired flavors.



Ben & Jerry's Waterbury Factory Tour

1281 Waterbury-Stowe Road, Route 100

Waterbury, VT 05676

866-258-6877

Tour is limited to 60 people per day.

Domestic Driving Tours – Self Directed

APRIL'S MAPLE DRIVING TOUR (SELF-DIRECTED)



The spring of 2013 marked their first year making maple syrup. They had (and continue to have) so much fun as they go about each day but that doesn't mean that they haven't made their share of mistakes and learned a fair share of lessons along the way! Remember, the sap only runs for about 20 to 30 days each year depending on the weather. This means that all of their maple syrup for the year needs to be produced within this window, so they don't have much room for error. They welcome us to come and visit.

Here is a typical spring day in the world of maple syrup production:

Waking up before the rooster crows. The sap starts to run when the weather is just right. In the spring, they prefer cold nights (below freezing) and warm days (above freezing) as this makes the sap flow best. Once the sap starts to collect, it needs to be processed right away so that they can produce the highest quality syrup. This means that each night they wake up at about 1:30 am and check the temperature outside. If it is still below freezing they go back to bed, if it is above freezing it is time to get out of bed and head to the sugar house!

Taking an unplanned sap bath – how we get ready to make syrup. It takes 40 gallons of sap to make 1 gallon of syrup as sap is 98 percent water and 2 percent sugar. Their first step is to get the sap to the sugar house and remove some of the water from it. They have two sets of tanks that hold sap, one is at the sugar house and the other is two miles up the road. They start by checking the one up the road. Once the tank starts to fill, They start the reverse osmosis system to remove some of the water from the sap. This shrinks the volume that they need to haul to the sugar house, which is two miles away. Once the sap is at 4% concentrate, it is pumped into a transfer tank that can hold 1,000 gallons of sap.

Once the sap is in the transfer tank they haul it to the sugar house with a ski-doo (which looks a little like a groomer you would find on a ski mountain but can work in the summer months too). The round-trip is about an hour and in any given day they may do that trip as many as five times, depending on the sap flow. They have two 5,800 gallon holding tanks in the sugar house for the sap that is hauled down in the transfer tank and the sap that runs directly to the sugar house. Once the sap is collected they run the reverse osmosis again, concentrating to 11% sugar this time.

Take a stroll in the woods. They have a vacuum system that runs when the weather is above freezing. The vacuum system helps them improve their production and it is important that they monitor the pressure of the system. They know that when the pressure drops below a certain level they probably have a leak in their maple sap tubing lines (maybe a moose decided to stroll through the lines and take a few down along the way). When the pressure drops, they strap on their snow shoes and start the search for leaks in the 60 – 70 miles of tubing that connects their maple trees to their sugar house.

Fire up the evaporator and get the steam going! Around 2 pm they are ready to turn on the two oil fired burners that power their evaporator. The evaporator consists of two syrup pans that are filled with sap. These pans sit over a fire which heats the sap and causes it to boil. As it boils, some of the water in the sap turns to steam, which rises out of the sugarhouse. (This is how they know they are boiling!) As the sap boils, it becomes thicker and sweeter. They know the maple syrup is ready when its temperature reaches seven degrees Fahrenheit above the boiling point of water. (They watch the sap as it boils to be careful it doesn't burn.)

Once the syrup is the perfect consistency (and sweet enough to pass their taste test), they run the syrup through the filter press to take out the "sugar sand" which accumulates as sap boils. Sugar sand is just minerals and nutrients that concentrate as the excess water is boiled away. If it is not filtered out, the maple syrup will appear cloudy. Around 6pm, after they have been at this for about 16 hours, they have some amazing maple syrup to show for their efforts!

April's Maple
507 VT Rt 114
Canaan, VT 05903
802-266-9624
www.aprilsmaple.com

Business hours are:
Monday – Saturday: 10am til 5pm
Sunday: 10am til 3pm

CALEDONIA SPIRITS DISTILLERY DRIVING TOUR (SELF-DIRECTED)



spirits

Caledonia Spirits – Barr Hill gin, Barr Hill vodka, Elderberry Cordial

The history of distilling is rooted in agriculture, and how to give value to a crop. When crops are used in distilling, they are also preserved and less expensive to transport. Our family made whiskey in Edinburgh for over 100 years, and J.W. Hardie continues to produce fine whiskey. Through my 49 years with the honey bees, I have a long relationship with the land, honey bees, and the crops that we are using at Caledonia Spirits, elderberries, corn, barley, and rye.

Thank you for your interest in and support of our work with our people, families, and farms.

Todd D. Hardie

*"The best fertilizer
is always the
footprint of the farmer."*
Thomas Hardie



CALEDONIA SPIRITS™ BARR HILL™ GIN

Barr Hill gin (90 proof)

The gin is a celebration of our special connection to the land. We use pure grain spirits as a canvas to showcase juniper berry and raw northern honey. Added just before bottling, the raw honey imparts unique floral qualities that vary with season and blossom. Our distillery, on the banks of the Lamoille River in the Northeast Kingdom, is rooted in the agriculture of Vermont. Hardwick, Caledonia Country, is a community inspired by farms where the production of milk, cheese, timber, grains, honey, seeds, and herbs are part of our lives and help define our place.



CALEDONIA SPIRITS™ BARR HILL™ VODKA

Barr Hill Honey vodka (80 proof)

Our relationship with the land and honey bees inspired and gave birth to this vodka. The soul of a beekeeper is filled with the rhythms that flow through the seasons, reflecting the changes in the flowers, rains, sun and all the forces that are a part of this beautiful mystery. Barr Hill Vodka is crafted from honey at our micro-distillery on the banks of the Lamoille River in Caledonia Country of the Northeast Kingdom of Vermont. Honey is carefully fermented in small batches, then gently distilled in our custom stills. The spirit which emerges reflects the essence of the soil and flowers visited by the bees.



Tom Cat barrel aged gin (86 proof)

Barrel aged 4-6 months in new, charred American White Oak, Tom Cat is a completely unique gin with whiskey-like notes of oak, spice and a finish of juniper and raw honey. Tom Cat is the modern day adaption of 18th century England's most revered spirit, Old Tom gin. After gin was outlawed by the Spirits Act of 1750, rebellious pub owners would hang a wooden plaque shaped like a black cat to inform the passerby of their defiance of the ban. Deposit a few pennies through the cat's mouth and a bartender would pour a ration of Old Tom to be sipped through a tube between the cat's paws.



Caledonia Spirits
46 Log Yard Drive
Hardwick, Vermont 05843
802.472.8000
info@caledoniaspirits.com
www.caledoniaspirits.com

Distillery hours
12 - 5 daily

Hill Farmstead Brewing Driving Tour (Self-Directed)



**Retail Shop: Wednesday Through Saturday
12 p.m. to 5 p.m.**

We accept Cash, Visa, MasterCard and Discover. Listed retail prices do not include 6% Vermont State Sales Tax nor 9% or 10% Vermont Meals or Onsite Alcohol Tax (respectively) as applicable.

Our Retail Shop is the only place that our beer is regularly available and can be purchased in bottles. We feature up to twelve of our beers on draft, available in 2 liter and 750ml, refillable bottles, as well as a selection of merchandise and some of the finest bottled beers available from close friends that we've met along our way. We do not ship beer directly to consumers.

Hill Farmstead Brewery offers a wide variety of beers and ales. They are sold at the brewery in both bottles and in Growlers which can be purchased on-site. They do not offer "tours" per se of the brewery.

Please note their days and hours of operation.

**Hill Farmstead Brewery
403 Hill Road
Greensboro, VT 05842
802-533-7450
www.hillfarmstead.com**

ISLE LA MOTTE DRIVING TOUR (SELF-DIRECTED)

Isle La Motte is an island in [Lake Champlain](#) in northwestern Vermont. It is the most remote and northern of the Champlain Islands. It is 7 by 2 miles (11.3 by 3.2 km). It lies close to where the lake empties into the [Richelieu River](#). It is incorporated as a [New England town](#) in [Grand Isle County](#).

The island is named after French soldier [Pierre La Motte](#) who built a military outpost on the island in 1666. Today the island has about 500 residents. The population swells many times over in the summer months. The island is the site of [Fort Sainte Anne](#), [Saint Anne's Shrine](#), the [Methodist Episcopal Church of Isle La Motte](#), the **Fisk Quarry** and **Goodsell Ridge Preserves**, the **Isle La Motte Elementary School**, and the **Isle La Motte Lighthouse**.



The island, along with Valcour Island was formed 480 million years ago as a reef during the Ordovician Period in a shallow tropical sea, near where Zimbabwe is today. At that time there was no life on dry land except for a few primitive plants such as mosses and algae. Almost all of life was in the oceans. Carbon dioxide levels were 14–16 times higher than today with high sea levels covering much of the continents, which were mostly located south of the equator. The stromatoporoid patch reef, one of the oldest known metazoan reefs, originally stretched a thousand miles from what is now Quebec to Tennessee but only a few remnants remain today.

Reef builders during this period in earth history were animal's bryozoans, stromatolites, stromatoporoids, sponges, and algae. Other citizens of the reef were cephalopods, gastropods, crinoids, and trilobites. Today fossil gastropods (snails) can be seen at the abandoned quarries.

Black limestone from the Chazy Fossil Reef formation was quarried on the island, the oldest quarry, behind Fisk Farms started as early as 1832. The limestone is composed of calcite, and fossils of marine creatures. It is so dark in appearance that it was marketed in the 18th and 19th century as *black marble* and was used for the construction of the U.S. Capitol building and the National Gallery of Art. Structures of the stone still visible on the island are: the Isle La Motte Public Library, the Isle La Motte Methodist Church, Isle La Motte Historical Society (formerly the South Stone School House), Ruins of the Fisk House at Fisk Farm, and the original Fisk House once owned by Lieutenant Governor Nelson Fisk).



KINGDOM BREWING DRIVING TOUR (SELF-DIRECTED)

Want to take a nice short drive on **Thursday, Friday or Saturday afternoon**? Kingdom Brewing in Newport, VT is a short drive away and offers craft beer made from local ingredients, some from their own farm. **Open from 3:30 p.m. to 6:30 p.m. only.**

WE'RE THE COOK FAMILY

It's a nice place to visit, but a hard place to make a living. With generations of our family having lived in the Northeast Kingdom, there was no doubt where we wanted to raise our family. But deciding on how to do it is often a long process of trial and error.

After years of trying out other professions, we decided to combine a lifelong interest in homebrewing, farming and building to create a working family farm and brewery.

We designed and built our tasting room, greenhouse and operations ourselves to ensure our guests were welcome and enjoyed the freshest and most natural beer in Vermont.

VERMONT'S ONLY WORKING FAMILY FARM & BREWERY



WHEN WE'RE OPEN

Kingdom Brewing
353 Coburn Hill Road
Newport, VT 05855
(802) 334-7096
kingdombrewing@yahoo.com

Thursday 3:30pm - 6:30pm
Friday 3:30pm - 6:30pm
Saturday 3:30pm - 6:30pm



MONTPELIER, VT DRIVING TOUR (SELF-DIRECTED)

Montpelier is the state capital of Vermont. It is the only state capital in the U.S. that doesn't have a McDonald's Restaurant. As the capital of Vermont, Montpelier is the site of the Vermont State House, seat of the legislative branch of Vermont government. The population was 7,855 at the 2010 census. By population, it is the smallest state capital in the United States. The Vermont College of Fine Arts and New England Culinary Institute are located in Montpelier.

The first permanent settlement began in May 1787, when Colonel Jacob Davis and General Parley Davis arrived from Charlton, Massachusetts. General Davis surveyed the land, while Colonel Davis cleared forest and erected a large log house on the west side of the North Branch of the Winooski River. His family moved in the following winter. The town developed into a center for manufacturing, especially after the Vermont Central Railroad opened in Montpelier on June 20, 1849—the same year East Montpelier was set off as a separate town. Falls on the Winooski River provided water power for mills. There was an iron foundry.

Today, government, higher education, insurance and tourism are principal businesses. The Vermont History Museum, operated in The Pavilion by the Vermont Historical Society, is an attraction as is the State House. There are also plenty of restaurants and pubs in Montpelier to satisfy most palates! Got a few extra minutes? Check out **Hubbard Park**. It isn't far from the State House.

The Vermont State House

115 State Street

Montpelier, VT 05633-5301

(802) 828-2228 **Hours 7:45 am to 4:15 pm M-F**

The Vermont State House is one of the oldest and best preserved of our nation's state capitols. After 140 years, the State House still commands Montpelier, the smallest capital city in America, and the House and Senate Chambers are the oldest legislative chambers in their original condition in the United States. As you tour the halls and chambers, we hope you will develop a sense of what makes this historic building, and the State for which it was built, unique. Guided tours are available free of charge Monday-Friday, 9:00 to 3:00.



The Vermont History Museum

109 State Street

Pavilion Building (next to the State House), Montpelier, VT

(802) 828-2291 **Hours 10:00 am to 4:00 pm Tue-Sat.**

The museum's core exhibit, "Freedom and Unity: One Ideal, Many Stories," opened in March 2004 and won a national award. The multimedia exhibit, which represents Vermont's history from 1600 to the present, fills 5,000 square feet in the Pavilion Building in Montpelier. Visitors walk through time and experience a full-sized Abenaki wigwam, a re-creation of the Catamount Tavern where Ethan Allen's Green Mountain Boys gathered, a railroad station complete with a working telegraph and a WWII living room furnished with period music and magazines. The museum shop offers some products from the historical Society's [online store](#) a wide variety of books, gifts, maps, and games—as well as Vermont Life products. The admission fee gives access to both the Vermont History Museum and the Vermont Heritage Galleries. Adults: \$5; families: \$12; students, children, seniors: \$3; members and children under 6: free.

MT. MANSFIELD SUMMIT DRIVING TOUR (SELF-DIRECTED)



Mount Mansfield is the highest mountain in Vermont with a summit that peaks at 4,393 feet above sea level. The summit is in Underhill; the ridgeline, including some secondary peaks, extends into the town of Stowe, and the mountain's flanks also reach into the town of Cambridge.

When viewed from the east or west, this mountain has the appearance of a (quite elongated) human profile, with distinct forehead, nose, lips, chin, and Adam's apple. These features are most distinct when viewed from the east; unlike most human faces, the chin is the highest point.

The mountain is used for various recreational and commercial purposes. "The Nose" is home to transmitter towers for a number of regional radio and TV stations. There are many hiking trails, including the Long Trail, which traverses the main ridgeline. In addition, the east flank of the mountain is used by the Stowe Mountain Resort for winter skiing.

A popular tourist activity is to take the **Stowe Mountain Auto Toll Road** (about 4 miles, steep, mostly unpaved, with several hairpin turns) from the Stowe Base Lodge to "The Nose." We will leave that road for the Cayenne's and Macan's and 959 Group B rally cars! That is **not** a sports car road.

However the **Mt. Mansfield Summit Tour** will utilize **VT-108** which is paved in its entirety! You will pass through the Mt. Mansfield area from north to south. Stowe, VT is just south of the mountain. Afraid of heights? Have High-Anxiety? Afraid of steep roads with no guard-rails and sharp turns? If the answer to any of this is yes, then stay in your room and sip "Whistle Pig."

There is much to do, see, eat and drink along the mountain road. Here is a list of some of the attractions:

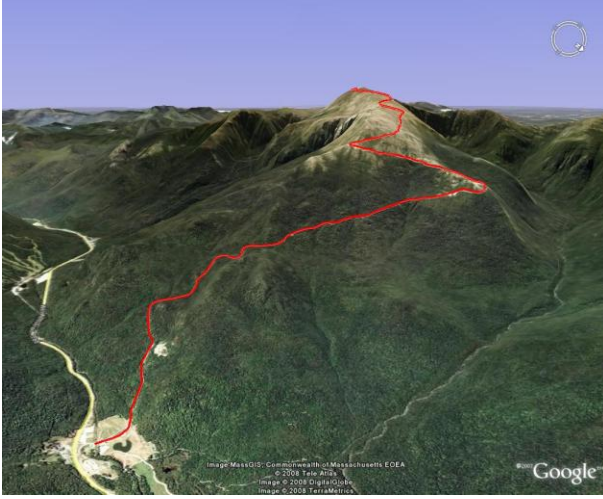
Three Mountain Lodge (Restaurant)
Brewster River Pub
Mountain Seasons Wood fired Bakery
Smugglers Notch Base Lodge (Some unpaved roads)
The Top of the Notch Boulder (Don't Blink)
Bingham Falls
Big Spring
Stowe Mountain Resort
The Matterhorn Restaurant
Idletyme Brewing Company
Blue Donkey Restaurant
The Bench (Restaurant)
The Village of Stowe



MT WASHINGTON AUTO ROAD DRIVING TOUR (SELF-DIRECTED)

Mt. Washington Auto Road enjoyed its **155th** season as America's first and oldest man-made attraction in **2016**. For over 150 years, friends and families have driven, toured and explored the **Mt. Washington Auto Road** making it the first and oldest man-made attraction in the entire country!

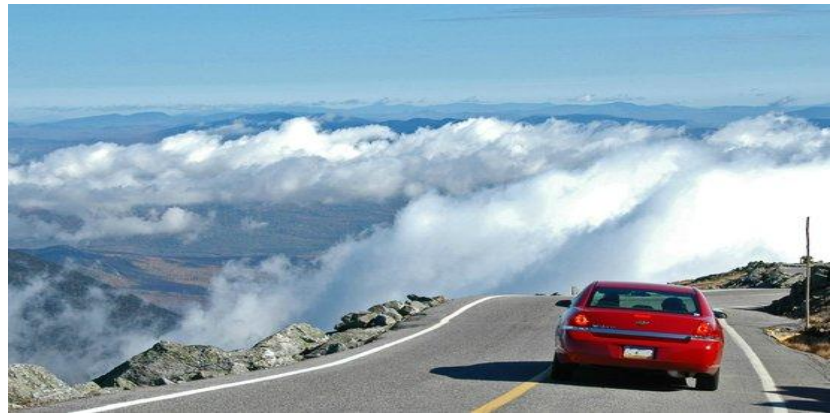
Completed and opened to the public in 1861, the privately-owned and operated Auto Road climbs 4,700 feet from the base and reaches more than a mile in the sky to the highest point in the Northeast at 6,288 feet. Access via the Mt. Washington Auto Road is available during the summer months with your own vehicles beginning at the Toll House at the base, (**some vehicle restrictions apply**) or by taking a guided tour via modern day "stages" which begin just across the street in the scenic Great Glen base lodge.



Located just 25 minutes north of North Conway on scenic NH Route 16, our unique location in Pinkham Notch offers spectacular views up to the Great Gulf Wilderness and the Presidential Mountain Range.

But, it's more than just the "This Car Climbed Mount Washington" bumper sticker. It's about a new experience at every turn. Even if you've already driven the Auto Road, you won't have the same drive twice. Weather, foliage, views...they're always changing. Due to its remarkable location, weather, and history, the Mt Washington Auto Road is unlike any other driving experience in the Eastern United States.

The constantly-changing weather adds to the allure and mystique of the famous peak, often allowing visitors to experience high winds and dramatic cloud formations. With an average grade of 12%, **one mile of gravel road (usually hard packed)** at mid mountain, and tree-line at only 4,000 feet, this is one of the most spectacular drives you can partake in. If you are a first time visitor who is not comfortable with heights, narrow mountain roads without guardrails, you may enjoy a comfortable **guided tour** rather than driving your own vehicle.



Car and Driver: \$28

Each additional adult: \$8

Children ages 5-12: \$6

Children under 5: Free

Guided Tour Rates:

Adults: \$35

Seniors (62+) & Military: \$30

Children ages 5-12: \$15

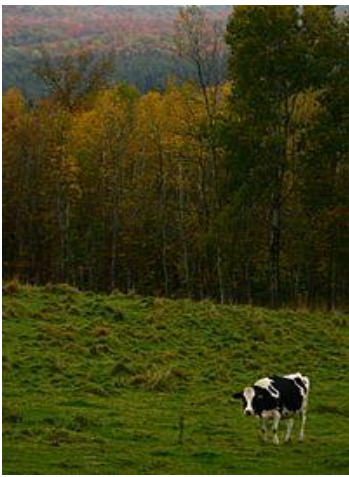
Children under 5: Free

All guided tours are two hours in total length including a full hour on the summit. All tickets include free admission to the Mt. Washington Observatory's brand new experience at the summit – Extreme Mount Washington.

NORTHEAST KINGDOM DRIVING TOUR

(SELF-DIRECTED)

The **Northeast Kingdom** is the northeast corner of the [U.S. state](#) of [Vermont](#), comprising [Essex](#), [Orleans](#) and [Caledonia](#) counties and having a population at the [2010 census](#) of 64,764. In Vermont, the written term "NEK" is often used. The term "**Northeast Kingdom**" is attributed to [George D. Aiken](#), former [Governor of Vermont](#) and a [U.S. senator](#), who first used the term in a 1949 speech. Referred to by Vermonters simply as "**The Kingdom**".



The Northeast Kingdom is bordered on the east by the [Connecticut River](#) and on the west by the [Green Mountains](#). The highest point is [Jay Peak](#), a summit on the main ridge of the Green Mountains, at 3,858 feet. The highest point outside of the Green Mountains is East Mountain in [East Haven](#), with a summit elevation of 3,439 feet.

The Kingdom encompasses 55 towns and [gores](#), with a land area of 2,027 square miles, about 21% of the state of Vermont. [The city of Newport](#) is the only incorporated city in the tri-county area.

The Northeast Kingdom has been listed in the North American and international editions of *1,000 Places to See Before You Die*, the *New York Times* best-selling book by Patricia Schultz. [National Geographic Society](#) named the Northeast Kingdom as the most desirable place to visit in the country and the ninth most desirable place to visit in the

world.

Coventry, VT: Is probably most widely known by some as home to the "final concert" of the band **Phish**, held in Coventry on August 14-15, 2004, near the Newport State Airport. Nearly 65,000 or so fans were in attendance.

Albany, VT: The town of Albany contains four villages: the incorporated village of Albany, and the unincorporated villages of Albany Center, East Albany and South Albany. The Northeast Kingdom Music Festival has been held in Albany VT for several years.

Greensboro, VT: Is home to the **Hill Farmstead Brewery**, a [craft brewery](#) named by RateBeer in 2015 as the **Best Brewery in the World, in the U.S., and in Vermont**. **Jasper Hill Farm**, which was awarded "Best Unpasteurized Cheese" for its Bayley Hazen Blue at the 2014 World Cheese Awards in London.

Wolcott, VT: Stop and take a peek at the **Fisher Railroad Covered Bridge**. Built in 1908 for the St. Johnsbury & Lamoille County RR. It is a State Historic Site, one of two remaining covered railroad bridges in Vermont. It has an unusual cupola running the length of the ridgepole. Good spot to stop and take a break!

Hyde Park, VT: The **Governor's House** in Hyde Park is a historic inn that serves "High Tea" on Thursdays between 3 and 6 pm. Located at 100 Main Street • Hyde Park, 05655 phone: 802-888-6888 email: info@onehundredmain.com

Montgomery, VT: **Mountain Fiber Folk**, members of the Mountain Fiber Folk Cooperative host a unique shop & studio located in picturesque Montgomery Center, Vermont. It is located at 188 Main, Montgomery Center, VT 05471

Richford, VT: If you have a few minutes, check out the **Grey Gables Mansion** at 122 River St, Richford, VT 05476

PEACHAM, VT DRIVING TOUR (SELF DIRECTED)

History:

In September 2005, Peacham was designated **"Best New England Village"** by Yankee Magazine, which wrote, **"Of all the villages in New England, Peacham is unsurpassed."** It is also known as the most photographed town in New England.

In 1763, Governor Benning Wentworth of New Hampshire gave a charter for the region to a group of proprietors, and the town was given the name Peacham (it is unclear exactly where this name came from). The original proprietors were speculators who surveyed the town, laid a few rudimentary roads, and divided it into lots, though the territory remained unsettled for some time.



In 1775, settlers, primarily from Connecticut and Massachusetts, bought the lots and built homes, developing the land for agriculture. The original settlers survived almost entirely through subsistence farming despite the long winters, hilly terrain, and rocky soil. Nine years later, records show a population of approximately 200 people. The first recorded town meeting took place in 1784, and selectmen were duly elected to govern the affairs of the town. Peacham was early on presented with a choice of having either the county courthouse or the county school, and the residents voted for the school. In 1795 the Caledonia County Grammar School received its charter, and the first school was established in a log structure on the Bayley Hazen Road, halfway between Peacham Corner and South Peacham.

In 1799, a library was established, which traveled from store to store. A congregational church was founded in 1794 – the first pastor, Leonard Worcester, was well known for his fiery sermons. His son, Samuel Worcester, later went on to be an important missionary to the Cherokee people, creating the first typeface for the Cherokee alphabet and gaining lasting fame as the plaintiff in the Supreme Court case Worcester v. Georgia.



Early residents, who came to be known as Peachamites, traded butter, eggs, and wheat for goods which they could not make at home, and also relied on the production and sale of items such as whiskey and potash to

help augment the relatively poor harvests. Almost from the beginning various trades and industries—as many as 30-35 at a given time—flourished. Lumbering, coopering, milling, butter making, tin ware, tanneries and leather goods provided goods for local consumption. From 1800 to 1830, sheep farming flourished as a more profitable endeavor than growing crops. In 1840, the town reached its greatest population of 1,443. From that date on, census numbers steadily declined. Farming methods changed, and dairy farming came to replace sheep. The larger more industrially advanced farms of the late 1800's could not support large families, and youth began to leave home.

In the 20th century, the population continued to decline to a low in the mid-600's. Farming also became less common due to competition with larger dairy farms in the West, and many farms either consolidated or went under. Tourism became

important during the 1900's as people opened their homes to visitors from the cities of the Atlantic seaboard, often derisively referred to as "flatlanders". With the advent of the railroad in Barnet and then motor vehicles, Peacham became a popular location for summer residents, some of whom were educators from Boston and New York. In the second half of the 20th century Peacham became a popular vacation spot and retirement home for prominent intellectuals and liberal thinkers – individuals like David Dellinger, William Lederer, Roman Jakobson, and the historian Shepard Clough all owned houses in town. Their interests and stimulation enhanced the cultural interests of the town.

The Peacham Library is a private library founded in 1810 as a resource for the debating team of the Caledonia County Grammar School. For the first century of its existence, the library possessed no fixed location and rotated from store to store around the town. The original library building was purchased in 1909. It burned in 1959, destroying almost the entire collection. The current library was constructed on the same location in 1960 and enlarged in 2001. The library has over 9,200 volumes and over 500 registered patrons.

Points of interest on the National Register of Historic Places:

Elkins Tavern (oldest structure)

Peacham Corner Historic District

Josiah and Lydia Shedd Farmstead

New Discovery State Park

Other points of interest:

Ashbel Goodenough Blacksmith Shop - an 1800s blacksmith shop which has been restored by the Peacham Historical Association with a working wooden forge

Ski-Tow Hill - operational in the 1960s

Devil's Hill

Widow Jennison Road

Martin's Pond

Martin's Pond Saw Mill (Location was on north side of access road. Spillway is still visible, but dry.)

Peacham Pond

Cemetery Hill (Academy Hill)

Peacham Bog

Cow Hill (highest point in town)

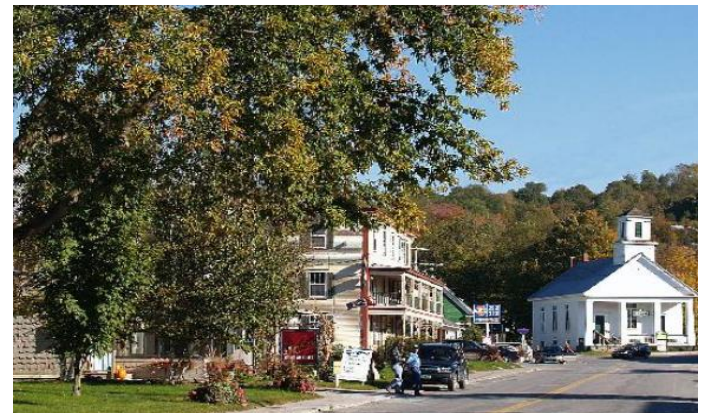
Bayley-Hazen Military Road

Peacham Congregational Church

The Civil War Soldiers Monument with the names of 42 men from town who died in the war

Peacham Observatory (ruins can be seen near Lookout Mountain)

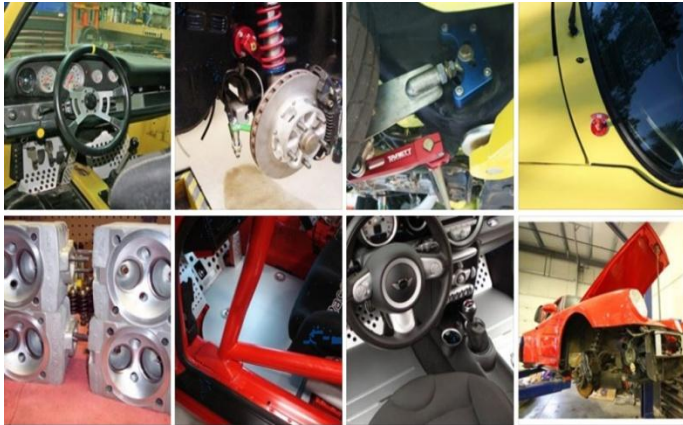
Yellow School House



RENNLINE DRIVING TOUR (SELF DIRECTED)

Vermont's range of offerings is vast, from the raw splendor of the Green Mountains to beautiful sunsets over the Burlington waterfront. Nestled in their midst is **Rennline Inc.**, manufacturers of aftermarket Porsche parts and accessories. Conveniently located in Milton, VT, moments north of Burlington and an hour jaunt from the Jay Peak Resort, is Rennline's facility.

Whether you are interested in doing a bit of shopping or would like a tour of their CNC equipped shop, **Rennline** has a bit of everything for everyone. Founded and owned by Paul Jacques, a talented industrial designer and above



all
die-
hard



Porsche enthusiast, **Rennline** has forged a reputation in the industry for their top notch products and service. Founded as an aerospace manufacturer, that background gave way to producing parts for the world's fastest cars while maintaining a diverse manufacturing profile.

Since 2001 **Rennline** has focused their energy on developing and producing high performance parts for Porsches of all generations. In a time where outsourcing has become all too common, **Rennline** has kept their focus on high quality in-house manufacturing. With the vast majority of their parts being produced in house, **Rennline** has a fully capable CNC shop that stays busy every day turning out everything from jet turbine pieces to Porsche suspension parts.

Anyone from the Concours enthusiast to the most technical of Porsche enthusiast will be sure to find something of interest here. Their convenient location means that you will probably be in the area during **Parade** already, and it is the perfect stop on your way through the winding mountain roads whether you're headed to Burlington or out to the Lake Champlain Islands

In honor of the **Porsche Parade** coming to their doorstep, **Rennline** will be hosting **Porsche Parade** participants for an open-house Friday the 24th beginning at 11AM. This will include a free BBQ lunch, "shop cars" on display and tours of the facility.

Please call to RSVP for lunch on Friday!

You are also welcome to stop in any day during the week from 9 am-5:30 pm to do some shopping or see their shop in full swing!

**Rennline, Inc.
32 Catamount Dr.
Milton, VT 05468**

(802) 893-7366 ext 107

www.Rennline.com

ROCK ART BREWING DRIVING TOUR (SELF DIRECTED)

Welcome To Rock Art Brewery

802-888-9400

632 Laporte Rd/Rt 100 Morrisville, Vermont.

We are north of Stowe and south of Morrisville as you are coming into town.

We have beers and Gear to go: growler refills, kegs, bottles, Rock Art swag, Vermont foods and handcrafted wood items!

OPEN @ 9:00 until 6:00 Monday-Saturday

TOURS: We have a wonderful viewing area upstairs that you are welcome to check out anytime!
Someone can go up with you to chat at 2:00 & 4:00 daily.

TASTINGS DAILY until 5:30
4 samples for \$4.00



Stump Jumper



Sunny & 75



Vermonster



Belvedere IPA



Jasmine Pale Ale



Magnumus ete Tomahawkus



Stowe Mountain Lodge Hourglass Ale



Ridge Runner



Whitetail



Double IPA



Double Porter



Hells Bock



Golden Tripple



Infusco



American Red



IPA



Midnight Madness



Riddler



Stock Ale

Rock Art Brewing is about a 45 minute drive from Jay Peak Resort.

Makes a nice stop on your trip to Stowe or Trapp Family Lodge

ROCK OF AGES VERMONT GRANITE QUARRY DRIVING TOUR (SELF DIRECTED)

TOURS AND FUN ACTIVITIES FOR INDIVIDUALS & FAMILIES

Guided Tours of Rock of Ages Barre Granite Quarry

The guided quarry tour takes you to an overlook of Smith Granite Quarry, at nearly 600 feet deep, we believe it to be the largest operating deep-hole, dimension granite quarry in the world.

The tour is approximately 40 minutes in length and typically runs rain or shine. However, tours may be delayed or cancelled during lightning storms and periods of torrential rain. Typically our tours depart at 9:15, 10:00, 10:45, 11:30, 12:40, 1:20, 2:05, 2:50 and 3:35. Please see the table above for current dates of operation. Please note quarriers work, except for holidays and associated days, Monday-Friday, 7-3:30. Therefore, there are no workers in the quarry for the weekday 3:35 tour or for Saturday and Sunday tours.

Guided quarry tour tickets are priced as follows: \$6.00 per adult, \$5.50 per senior (62+), \$2.75 per child (6-13); children under 6 are admitted for free if they ride on a lap.



Self-guided and Cell Tours of our Rock of Ages Vermont Factory, Made in Vermont USA

A tour of our 160,000 square-foot factory is not to be missed. The factory is an exercise in contrasts, with artisans using hand tools in much the same way as Michelangelo did centuries ago. These little-changed, artistic endeavors are mingled among computer-guided, diamond-tipped saws, precision grinders and laser-etching equipment. We invite you to come see products proudly made in the USA.

The self-guided tour of our factory is free to all and is available Monday—Friday, 8-3:30. Enrich the viewing of our artisans at our factory by taking our cell map tour. For just \$5.00, the cellmap tour enables you to listen to audio descriptions of the various granite finishing processes on your cell phone—does not require a smart phone. The map also provides wonderful descriptions—the stories behind the stones—of the incredible monuments at nearby Hope Cemetery.

If you are going to drive the Montpelier, VT tour, the **Rock of Ages Granite Quarry** is very close by. Check the web site at:

www.rockofages.com/en/visitors/overview/

ROCK OF AGES GRANITE QUARRY
560 Graniteville Road,
Graniteville, VT 05654
800-421-0166

SEVEN COVERED BRIDGES DRIVING TOUR

(SELF-DIRECTED)

Vermont has numerous covered bridges both for roads and for railroads. Many of them are located in and around the Northeast Kingdom (Near Jay Peak Resort). This tour will bring you to a number of bridges within a short drive of the resort. You may encounter unpaved roads on the tour but in many instances you can walk a short distance from the paved road to the covered bridge.



The **River Road/School House Bridge (1910)** is located on River Road in Troy. Barn red, the ninety-two foot School House Bridge stands at a bend in the Missisquoi River, next to a ford and a sandbar. At low water, a viewer can walk out on the bar to within a hundred feet of the span.

The **Hopkins Covered Bridge (1875)** is a wooden covered bridge that crosses the Trout River in Enosburg, Vermont on Hopkins Bridge Road. It was listed on the National Register of Historic Places in 1974. It is 90 feet long.



The **Longley Covered Bridge (1863)**, also known as the **Harnois Covered Bridge** is a wooden covered bridge that crosses the Trout River in Montgomery, Vermont on Longley Road. It was listed on the National Register of Historic Places in 1974. It is 85 feet long.

The **Comstock Covered Bridge (1883)** is a wooden covered bridge that crosses the Trout River in Montgomery, Vermont on Comstock Bridge Road. It was listed on the National Register of Historic Places in 1974. It is 69 feet long.



The **Fuller Covered Bridge (1890)**, also known as the **Blackfalls Covered Bridge** is a wooden covered bridge that crosses Black Falls Brook in Montgomery, Vermont on Fuller Bridge Road. It was listed on the National Register of Historic Places in 1974. It is 50 feet long.

The **West Hill Covered Bridge (1883)**, also known as the **Crystal Springs Covered Bridge** is a wooden [covered bridge](#) that crosses West Hill Brook in [Montgomery, Vermont](#) on Creamery Bridge Road. It was listed on the [National Register of Historic Places](#) in 1974. It is 59 feet long.



The **Hutchins Covered Bridge (1883)** is a wooden covered bridge that crosses the South Branch of the Trout River in Montgomery, Vermont on Hutchins Bridge Road. It was listed on the National Register of Historic Places in 1974. It is 77 feet long.

SHELBURNE MUSEUM DRIVING TOUR (SELF-DIRECTED)

Approximately 1 ¼ hour's drive each way



Located in Vermont's scenic Lake Champlain Valley, Shelburne Museum is one of the finest, most diverse and unconventional museums of art and Americana. Over 150,000 works are exhibited in a remarkable setting of 38 exhibition buildings, 25 of which are historic and were relocated to the Museum grounds.

Impressionist paintings, folk art, quilts and textiles, decorative arts, furniture, American paintings, and a dazzling array of 17th-to 20th-century artifacts are on view. Shelburne is home to the finest museum collections of 19th-century American folk art, quilts, 19th- and 20th-century decoys, and carriages.

Electra Havemeyer Webb (1888-1960) was a pioneering collector of American folk art and founded Shelburne Museum in 1947. The daughter of H.O. and Louisine Havemeyer, important collectors of European and Asian art, she exercised an independent eye and passion for art, artifacts, and architecture celebrating a distinctly American aesthetic.

When creating the Museum she took the imaginative step of collecting 18th- and 19th-century buildings from New England and New York in which to display the

Museum's holdings, relocating 20 historic structures to Shelburne. **These include houses, barns, a meeting house, a one-room schoolhouse, a lighthouse, a jail, a general store, a covered bridge, and the 220-foot steamboat, *Ticonderoga*.**

Mrs. Webb sought to create "an educational project, varied and alive." What visitors experience at Shelburne is unique: remarkable collections exhibited in a village-like setting of historic New England architecture, accented by a landscape that includes over 400 lilacs, a circular formal garden, herb and heirloom vegetable gardens, and perennial gardens.

The Museum's collections, educational programs, special events, workshops, activities, and special exhibitions constantly offer new perspectives on four centuries of art and material culture, assuring visitors a museum experience unlike any other.

Open daily from 10 a.m. to 5 p.m.

Admission:

Adult: \$10

Youth (ages 5-17): \$5

Child (ages under 5): Free

Shelburne Museum

6000 Shelburne Road

Shelburne, VT 05482

802-985-3346

www.shelburnemuseum.org



ST. JOHNSBURY AREA DRIVING TOUR (SELF-DIRECTED)

I got a call from the owner of **The Pizza Man** Restaurant, 663 Broad St, Lyndonville, VT 05851-8691 802-626-4766. He is a PCA guy who owns a chain of pizza restaurants in the area. In reviewing the route to the **St. Johnsbury Athenaeum** and the **Fairbanks Museum** I see that the route goes right past The Pizza Man Restaurant. So Pizza Man it is! Lunch time?



The Fairbanks Museum

The Fairbanks Museum was founded in 1889 by St. Johnsbury industrialist Franklin Fairbanks. Inside our classic Victorian building, you'll find a dazzling array of animals and artifacts, dolls and tools, shells and fossils, and much more! Take a trip through the cosmos in Vermont's only public planetarium. When Franklin Fairbanks opened the doors to this Museum in St. Johnsbury, Vermont over a century ago, he invited all of New England to see beyond the horizon by bringing exquisite examples of natural science and beautiful artifacts from around the world to his home town. His "cabinet of curiosities" grew to include our National Historic Register building, a triumph of Victorian architecture, the cornerstone of St. Johnsbury's Victorian Main Street. Our collections include:

75,000 natural science specimens (mounted birds, mammals, reptiles and fish; insects; nests and eggs; shells; fossils; rocks and minerals; herbarium)

95,000 historical artifacts (tools; toys; dolls; textiles; weapons; archival photographs and documents)

5,000 ethnological items representing Oceania, the Near East, Africa, Egypt, Japan and native North America.

The **Lyman Spitzer Jr. Planetarium**, Vermont's only public planetarium, opened in 1961 and continues to offer guided tours of the cosmos every day. Since 1981, meteorologists at the Museum have produced Eye on the Sky weather programming that is broadcast daily by Vermont Public Radio. The Fairbanks Museum is located at 1302 Main Street, St. Johnsbury, Vermont. The Museum is open from 9 to 5pm.



St. Johnsbury Athenaeum

The St. Johnsbury Athenaeum is a private, nonprofit public library and art gallery located in St. Johnsbury, Vermont. The Athenaeum fills two roles: it serves the people of St. Johnsbury by enriching their lives, and it stands as a regional and national treasure - a monument to the nineteenth-century belief in learning. The Athenaeum is a legacy of the Fairbanks Family of St. Johnsbury, inventors and manufacturers of the world's first platform scale, who gave the Athenaeum to the trustees of the institution in 1871. With his wealth Horace Fairbanks created a center of culture for the people of his town - a true "athenaeum." The facility is located at 1171 Main St, St Johnsbury, VT 05819 Phone :(802) 748-8291



Maple Grove Farms Of Vermont

1052 Portland Street

Saint Johnsbury, VT 05819

Visit their Sugar House Museum and learn about the Whole Sugaring Experience'.... Then browse their spacious red-roofed Cabin Gift Shop. Call for hours 800-525-2540 ext 5547

STOWE MOUNTAIN AUTO TOLL ROAD DRIVING TOUR (SELF-DIRECTED)



The historic auto Toll Road zigs and zags its way to the summit ridge of Mt. Mansfield where stunning views of Lake Champlain and the Adirondack Mountains await you. The majority of this tour route is on **unpaved roads**. Perhaps it is not the best roads for Porsche sports cars. However, it is a perfect road for Cayenne's and Macan's and the occasional Porsche 959 Group B rally car! What, no guard rails? **Phone Number: 802-253-3000**

AUTO TOLL ROAD RATES

Auto and driver: \$19.00

Additional passenger: \$6.00

Hours: 9:00am – 4:00pm

Dates: Daily, Weather permitting

Operating hours are **ALWAYS** subject to weather.



Please note: Closing time is the last time cars are allowed to **start up** the Toll Road; **ALL** vehicles should leave the summit no later than 45 minutes after closing time. The Toll Road gate is locked at 5:00pm.



TRAPP FAMILY LODGE DRIVING TOUR (SELF-DIRECTED)



The front of the Austrian-style main building of the Trapp Family Lodge

The **Trapp Family Lodge** is a 2,400-acre, four-and-a-half-star resort located in Stowe, Vermont, United States. The lodge is managed by Sam von Trapp, son of Johannes von Trapp.

History



The Trapp family, largely fictionalized in *The Sound of Music*, based loosely on *The Story of the Trapp Family Singers* by Maria von Trapp left Austria shortly after its annexation by Nazi Germany in 1938. Baron Georg von Trapp and his wife Maria settled with their family in Vermont in 1942. After the Baron's death in 1947, the family expanded and operated their home as a 27-room ski lodge. It was destroyed by fire on 20 December 1980, forcing 45 people, including Baroness von Trapp, to flee in their nightclothes. The body of a 30-year-old guest was found later in the rubble. A new Austrian-style lodge with 93 rooms was opened in 1983.

By the time Maria von Trapp died in 1987, thirty-two family members shared ownership of the lodge. Johannes von Trapp instigated a merger to eliminate the interests of other family members in 1994. Family members were displeased by the merger and fought back with legal proceedings about the amount to be paid to them in exchange for their shares; a controversy which had to be resolved by the Supreme Court of Vermont.



Facilities

The Lodge offers a mountain biking trail, gym, tennis court, and sleigh rides. It has a restaurant, access to cross country skiing and maple sugaring.

The meadow at the Lodge was one of the principal sites for the annual Vermont Mozart Festival.



In 2010, the Lodge began to brew beer, producing approximately 60,000 US gallons (230,000 l; 50,000 imp gal) annually. The brewery produces traditional German and Austrian style lagers. The beers are sold on-site, as well as at restaurants and bars throughout Vermont.

Family cemetery

A cemetery on the grounds of the Lodge contains the graves of several family members.

Cross-country skiing



During the winter of 1968–69, Johannes von Trapp, then president of Trapp Family Lodge, Inc., came up with an idea to start cross-country skiing trails at the Lodge. Today, there are 45 kilometers (28 mi) of groomed trails and 100 kilometers (62 mi) of un-groomed trails throughout the Trapp Family Lodge property.

TRAPP FAMILY LODGE

700 Trapp Hill Rd

Stowe, VT 05672

www.trappfamily.com

(802) 760-6325

Trapp Family Lodge

PROPERTY MAP

A MAIN LODGE

- Main Dining Room
- Gift Shops
- Meeting Spaces
- Real Estate Office
- Lounge

B OUTDOOR CENTER

- Rent bikes, helmets and other summer gear
- Sign up for tours

C FITNESS CENTER

- Exercise Classes
- Hot Tub & Pool
- Climbing Wall
- Spa
- Yoga
- Mountain Kids Club

D DELIBAKERY

E GUEST HOUSES

F THE VILLAS

G GREENHOUSE

H SUGAR HOUSE

I THE CABIN

J CHAPEL

K LAUNDRY

SLAYTON PASTURE CABIN
(bikes, bikes, trail run)

5x from Outdoor Center



- The Birches
- Campfire
- Working Meadow

OUTDOOR CENTER

Marla pool

FITNESS CENTER

family pool

tennis courts

Trapp Hill Road

LAUNDRY

Town of Snowe (4.5 miles)

disc golf

NEW
VON TRAPP BREWERY

28 27 26 25

2/1 21 20/19 18/17 15/16 13/14 9/10 11/12 28 30/29

1 3 5 7 9 11 15 17 19 21 23

2 4 6 8 10 12 14 16 18 20 22 24

GUEST HOUSES

VERMONT BACK ROADS DRIVING TOUR (SELF-DIRECTED)



The Old Stone House Museum includes six buildings on fifty five acres. Seemingly untouched by time. This hillside town is centered around a monumental stone dormitory, called Athenian Hall, built in 1834-36 by the Rev. Alexander Twilight, the nation's first African-American college graduate and state legislator. There are 21 rooms of exhibits focusing on 19th century life in northern Vermont. The collection includes furniture, textiles, photographs, pottery, folk and fine art, and many of the tools and utensils of daily life. The exhibits continue in Twilight's own house, two more historic houses and a traditional barn. Address is 109 Old Stone House Road, Orleans, VT 05860 Phone (802) 754-2022 | Open May 15 - October 15, Wednesday through Sunday, 11 am to 5 pm information@oldstonehousemuseum.org

I got a call from the owner of **The Pizza Man** Restaurant, 663 Broad St, Lyndonville, VT 05851-8691 802-626-4766. He is a PCA guy who owns a chain of pizza restaurants in the area. He invited all Porsche Parade attendees to come and eat at one of his restaurants. Not in the mood for Italian? Then proceed to the **Freighthouse Market and Café**.



The Freighthouse Market and ([farm-to-table](#)) Cafe.

Housed in an authentic, late 1800's renovated freighthouse, imagine the fragrances and sounds of a rural Vermont farmhouse kitchen...the warm and savory, comforting smells of the farm fresh certified organic offerings that the farm family lovingly planted, raised, harvested, prepared and cooked, mingled with robust coffee. The farm family chatting in the kitchen...

1000 Broad St. Lyndonville, VT 05851 802-626-1174

CAFE & STARBUCKS COFFEE HOURS:

Monday- Saturday 6:30 a.m. – 5:30 p.m. (Kitchen closes at 4:00 p.m.)

Sunday 7 a.m.– 5:30 p.m. (Kitchen closes at 4:00 p.m.)

The St. Johnsbury Athenaeum is a privately owned public library and art gallery located in St. Johnsbury, Vermont. The Athenaeum fills two roles: it serves the people of St. Johnsbury by enriching their lives, and it stands as a regional and national treasure - a monument to the nineteenth-century belief in learning. The Athenaeum is a legacy of the Fairbanks Family of St. Johnsbury, inventors and manufacturers of the world's first platform scale, who gave the Athenaeum to the trustees of the institution in 1871. With his wealth Horace Fairbanks created a center of culture for the people of his town - a true "athenaeum." The facility is located at 1171 Main St, St Johnsbury, VT 05819 Phone :(802) 748-8291



Cabot Creamery Visitors Center

At our Visitors Center in Cabot, where we began in 1919, you can join a factory tour, watch talented cheese makers create our award-winning cheddars, and enjoy plenty of samples — all in one of the most scenic spots in America. Our visitors say the drive alone is worth it! Take our guided tour and view our award-winning cheese as its being made. You'll learn a ton about cheese making, and Cabot's history — not to mention a bit about Vermont agriculture. **Tour Details: Tour Fee: \$3.00, children under 12 Free** Call ahead (1-800-837-4261) to confirm the cheese making is taking place before visiting. **Open Daily, 9:00 a.m. - 5:00 p.m.**

VERMONT REINDEER FARM DRIVING TOUR (SELF-DIRECTED)

***This tour is only available Thursday 06/23, Friday 06/24 and Saturday 06/25/2016**

They have the only reindeer in the whole state of Vermont! **They anticipate that a reindeer calf will be born in late May of 2016.** Perhaps they will name it "Carrera." Just in time for our visits! Male reindeer are called bulls, females are called cows and babies are called calves. They also have many other farm animals to pet & feed. There is a Nature Trail on the property. In June the ferns are growing.... the reindeer LOVE ferns, take a walk along the Nature Trail and pick ferns to feed the reindeer.

Admission is \$5.00, and they will have a free tasting of their hand pressed wild apple cider and a Cabot cheese sampler is available! They will also have Kingdom Creamery maple ice cream for sale which is made by a local farm Family! They have a gift shop where they sell locally produced products. They have Vermont reindeer T- shirts, handmade pottery, maple syrup, hand felted ornaments and hats. They also sell soaps, lotions, crèmes and other natural products under the trade name "Nature's Touch."



Vermont Hand Crafted Soap

Our soap is made in small batches to assure quality and uniqueness. Sweet almond oil and Vitamin E are added for their moisturizing qualities. After the soap is made it is then "put to bed" for 24 hours, cut into bars and cured for 4 weeks, thus producing a rich, mild, long lasting bar with lots of lather! There is nothing like a great bar of fresh handmade soap!

Fragrance Oils

1. Country Kitchen - Cinnamon, Clove, Vanilla & Cranberry
2. Cinnamon - Cinnamon & poppy seeds!
3. Blackberry Sage - Blackberries, Green Sage
4. Grandmothers Farm & Garden - Pure natural dirt, grease and grime remover in a bar!

Essential Oils

5. Sweet Orange Mint - Essential Oils - Orange, Spearmint & Peppermint
6. Garden Mint - Peppermint & Spearmint Essential Oils
7. Bare Lavender - Essential Oils Lavender & Patchouli
8. Patchouli - Essential Oil Patchouli
9. Lemongrass Mint - Essential Oils Lemongrass & Peppermint
10. Goatmilk

This is a partial listing of our many soap scents. We do many seasonal scents. Please email or call for availability.

\$4.00ea. bar
Please list soap #
on order form

Facial Care

The most important step in total facial skin care is proper cleansing. A daily routine of cleansing and moisturizing will keep your skin healthy & glowing!

Foamy Facial Wash

4oz. \$10.00

Made with 100% Spearmint Essential Oils

Honey & Oat Scrub

4oz. \$10.00

A natural scrub created with honey, oats, & almonds

Cucumber Cream

4oz. \$10.00

Excellent facial cream for day or night use. Contains all natural cucumber juices!

Vitamin E Lip Balm

Our Vitamin E Lip Balm is a true moisturizer for your lips.

Nourishing, Moisturizing

Tastes Great!

1. Vermont Maple - Our Newest!
2. Lemongrass - Peppermint
3. Red Currant
4. No Flavor
5. Ginger - Peach
6. Peppermint
7. Vanilla
8. Strawberry Lime
9. Raspberry Lemonade
10. Winter Breeze (Peppermint & Spearmint)
11. Apricot Plum
12. Cinnamon Ginger Mint
13. Blueberry
14. Lavender Chamomile Vanilla
15. Chai Tea
16. Orange - Tangerine

3oz. Lip Tube \$2.75 ea.

Or 3 for \$7.00

Please list flavor #

Silky Hand & Body Lotion

Our moisture enriched lotion will help keep your skin soft & supple. It contains rich natural ingredients such as: Sunflower Oil, Shea Butter, Hydrolyzed Silk & Aloe Vera.

Essential Oils

Bare Lavender

Peaceful Patchouli

Stress Relief

(Lavender & Spearmint)

Fragrance Oils

Cucumber-Melon

Blackberry Sage

Grapefruit Ginger

Sweet Vanilla

Pomegranate

VT Snow

\$10.75 / 8 oz.

Please List Specific Scent

Moisturizing Mist

Helps relieve that dry winter itch!

This moisture enriched mist is delicate & light. It is quickly absorbed with no sticky after feel.

Mist on after shower or bath to moisturize all over your body.

Essential Oils

Bare Lavender

Peaceful Patchouli

Stress Relief

(Lavender & Spearmint)

Fragrance Oils

Cucumber - Melon

Blackberry - Sage

Grapefruit Ginger

Sweet Vanilla

Pomegranate

Please List Specific Scent

4oz. / \$5.50

Mineral Bath Salts

Soaking in a warm scented bath not only gets you clean, it's relaxing & refreshing. The scents are soothing and the sea salts offer softening and healing qualities. Each Sampler includes 6 bath size samples.

Country Sampler #1

Mint Explosion / Blackberry - Sage

Pomegranate / Cucumber - Melon

Sweet Vanilla / Black Raspberry

Relaxing Sampler #2

Bare Lavender / Peaceful Patchouli

Stress Relief / Grapefruit Ginger

Citrus Grove / Oatmeal Milk Honey

Mineral Bath Salt Sampler: \$6.00

Please List #1 or #2



Foot Care

"Oh My Aching Feet"

Fizzy Foot Soak

Step your tired aching feet in the fizzy wonder of minerals & oils.

Made with pure essential oils!

Lavender, Mint, Lemongrass

\$1.00 ea.

Each Sampler includes:

2 Bare Lavender / 2 Refreshing Mint

Foot Soak Sampler: \$4.50



Lanolin Cream

Lanolin is obtained from sheep's wool. Lanolin is known to effectively soften dry, chapped, cracked skin as its thick consistency allows it to remain on the skin longer. It is easily absorbed and helps hold moisture to the skin for longer periods of time.

We use pure essential oils, Our special blend includes: Spearmint, Peppermint, Lavender & Clary Sage

4oz. / \$12.00



Tea Tree & Lavender Cream

This cream is produced using the highest quality Tea Tree & Lavender Essential Oils available. It can be used for cuts, abrasions, burns, blisters, bites and other minor skin ailments.

4 oz. / 12.00



"Oh My Aching Feet"

Foot Cream with Shea Butter!

Moisturize your feet with our softening & healing foot cream!

100% Pure Essential Oils

Our blend of Peppermint & Tea Tree

Foot Cream

4oz. / \$10.00

Nature's Touch

Vermont Made

Bath & Body Products!



We are a small Vermont farm family owned business. We are located in West Charleston, Vermont, in the beautiful Northeast Kingdom! On our small farm we have... Equines, Mini Donkey, Angora bunnies, Nigerian Dwarf goats, Pygmy goats, 2 dogs, 2 cats.

30 chickens that produce the best farm fresh eggs for our many customers. We also own the only 3 live reindeer in the State of Vermont, Comet, & Prancer, Blitzen!

Look for them to be out visiting local businesses around Christmas time!

Our bath and body business produces many products. We use all natural ingredients including 100% pure essential oils & moisturizing oils such as olive, sweet almond & coconut, goats milk, & lanolin.

Other natural ingredients come right out of our farm kitchen cupboards: oats, sea salts, poppy seeds, honey & maple syrup!

Handcrafted Soap / Mineral Bath Salts

Lotions & Creams

Facial Cleansers & Scrubs

Vitamin E Lip Balm

Fund Raisers

Check us out on Facebook!

Vermont Reindeer Farm

Nature's Touch

3108 Chilafoux Road

Orleans, Vermont

802-754-9583

jbproe@gmail.com

Thanks for supporting local made products!

VERMONT REINDEER FARM
3108 Chilafoux Rd (West Charleston)
Orleans, Vermont
(802) 754-9583
Open 10 a.m. to 4 p.m.
Thurs. 06/23
Fri. 06/24
Sat. 06/25

